



Fifth & Pike

SEATTLE • RETAIL CORE

PROJECT OVERVIEW

The iconic 1505 5th Building sits at the corner of 5th & Pike, the center point of the retail core. Explore this opportunity for a flagship position in the heart of downtown.





IN THE HEART OF SEATTLE'S DOWNTOWN RETAIL CORE

22M+

ANNUAL VISITORS

\$1.6B

DOWNTOWN SEATTLE
RETAIL SALES

15k+

HOTEL ROOMS

98k

PARKING SPACES

33k+

NEW RESIDENTIAL UNITS
(DEVELOPED OR PLANNED)

18M+

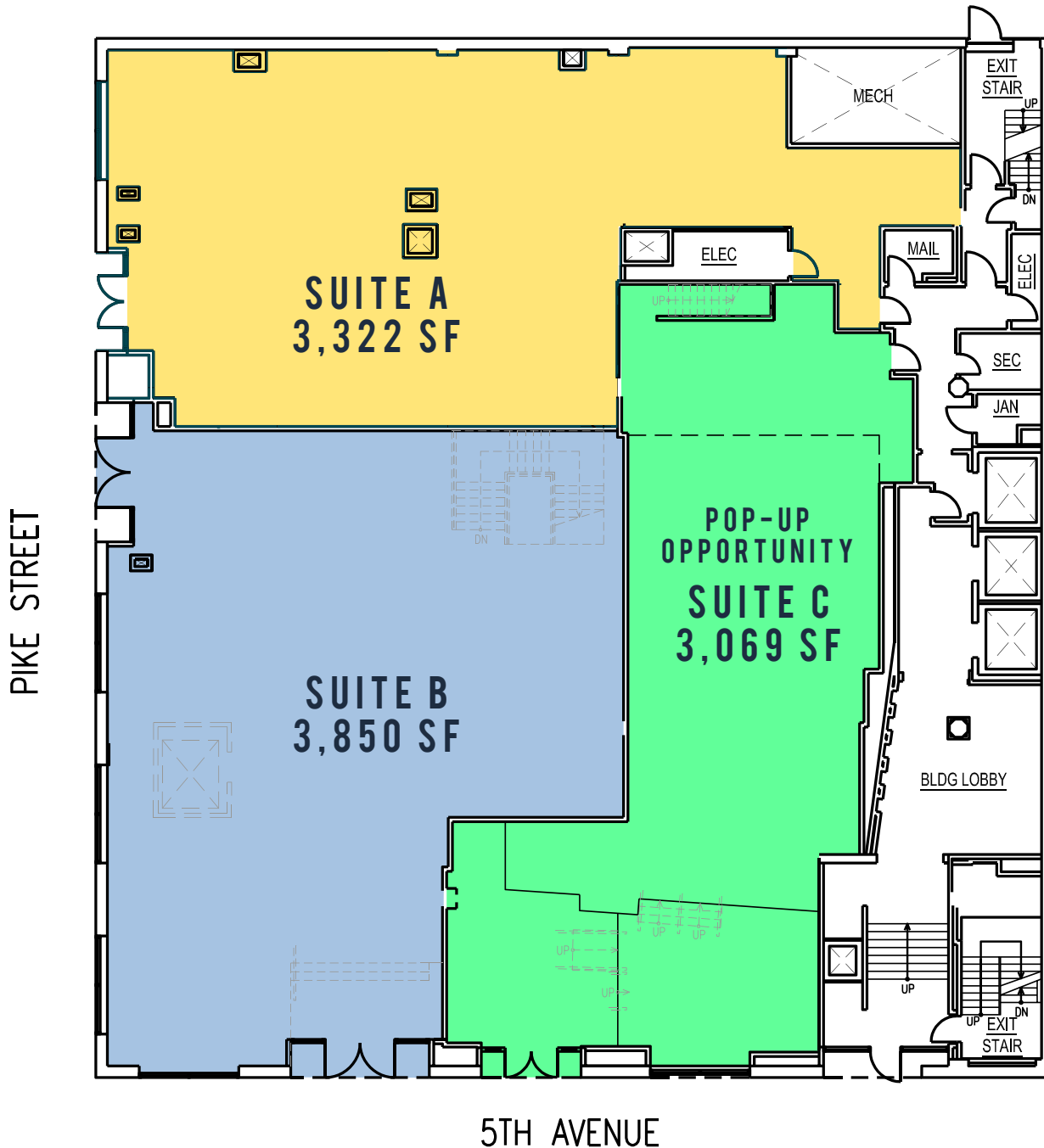
SQ.FT OF NEW OFFICE
(DEVELOPED OR PLANNED)



DOWNTOWN SEATTLE MAP



Fifth & Pike
GROUND LEVEL SITE PLAN



PROJECT DETAILS

ADDRESS 1505 Fifth Avenue
Seattle, WA 98101

NNN's.....\$ 11.16 PSF

Suite A.....3,322 SF
*Suites A & B can be combined to 6,797 SF
+ the Lower Level 2,277 SF*

Suite B.....3,850 SF - L1
2,260 SF - Mezz*
(Can be expanded to 4,636 SF)

Suite C.....3,069 SF - L1
1,966 SF - Mezz
*Excellent pop-up or long-term retail opportunity
for plug and play retailers*

Andrew Miller
206.818.3629 Cell
amiller@real-retail.net

Eric Zuehlsdorff
808.221.1134 Cell
eric@real-retail.net

206.464.0600 Office
info@real-retail.net

This information supplied herein has been secured from sources believed to be reliable; however, no representations are made to its accuracy. Prospective tenants or buyers should consult their professional advisors and conduct their own independent investigation. Properties are subject to change in price and/or availability without notice.